



**SEVENTH FRAMEWORK PROGRAMME  
CAPACITIES**



**Research Infrastructures  
INFRA-2007-1.2.1 Research Infrastructures**

**DRIVER II**

**Grant Agreement 212147**

**“Digital Repository Infrastructure Vision for European Research II”**



**Belgium as a Case Study for Best practice for National IR  
websites**

Deliverable D3.8



## Document Description

Project	
Title:	DRIVER, Digital Repository Infrastructure Vision for European Research II
Start date:	1 <sup>st</sup> December 2007
Call/Instrument:	INFRA-2007-1.2.1
Grant Agreement:	<b>212147</b>
Document	
Deliverable number:	D3.8
Deliverable title:	Best practise for National IR websites.
Contractual Date of Delivery:	Nov 1 <sup>st</sup> , 2008
Actual Date of Delivery:	
Editor(s):	Karen Van Godtsenhoven, Sophia Jones, Mary Robinson
Author(s):	Karen van Godtsenhoven, Sophia Jones, Mary Robinson
Reviewer(s):	Relevant partners
Participant(s):	UGent, UoN
Workpackage:	WP3
Workpackage title:	Dissemination and support
Workpackage leader:	UoN
Workpackage participants:	SURF, CNR, UKOLN, ICM, UGOE, NKUA, UGENT
Distribution:	General Public
Nature:	Report
Version/Revision:	1.0
Draft/Final:	Draft
Total number of pages: (including cover)	
File name:	Deliverable 3.8
Key words:	Best practices, use-cases, national websites, portal, repositories



## Disclaimer

This document contains description of the DRIVER II project findings, work and products. Certain parts of it might be under partner Intellectual Property Right (IPR) rules so, prior to using its content please contact the consortium head for approval.

In case you believe that this document harms in any way IPR held by you as a person or as a representative of an entity, please do notify us immediately.

The authors of this document have taken any available measure in order for its content to be accurate, consistent and lawful. However, neither the project consortium as a whole nor the individual partners that implicitly or explicitly participated in the creation and publication of this document hold any sort of responsibility that might occur as a result of using its content.

This publication has been produced with the assistance of the European Union. The content of this publication is the sole responsibility of the DRIVER II consortium and can in no way be taken to reflect the views of the European Union.

The European Union is established in accordance with the Treaty on European Union (Maastricht). There are currently 27 Member States of the Union. It is based on the European Communities and the member states cooperation in the fields of Common Foreign and Security Policy and Justice and Home Affairs. The five main institutions of the European Union are the European Parliament, the Council of Ministers, the European Commission, the Court of Justice and the Court of Auditors. (<http://europa.eu.int/>)



DRIVER II is a project funded by the European Union

## Table of Contents:

<b>Table of Contents:</b> .....	<b>4</b>
<b>Executive Summary</b> .....	<b>5</b>
<b>1 Introduction and starting point</b> .....	<b>6</b>
1.1 Introduction.....	6
1.2 Objective of this document .....	6
1.3 Method.....	6
1.4 Countries and partners .....	7
<b>2 Phase I: DRIVER I</b> .....	<b>8</b>
2.1 Multilingual Information Portal.....	8
2.2 Networking.....	10
2.3 Public relations.....	11
<b>3 Phase II: DRIVER II</b> .....	<b>12</b>
3.1 Interactive Repository Portal .....	12
3.2 Portal Scenarios .....	13
3.3 Statistical Analysis.....	14
<b>4 Future: Budget, Sustainability and Evolution</b> .....	<b>16</b>
4.1 Budget.....	16
4.2 Sustainability .....	16
4.3 Evolution .....	17
<b>5 Conclusion</b> .....	<b>18</b>
<b>6 Appendices</b> .....	<b>19</b>
6.1 Appendix 1 Survey sent to other national repository portal managers. ....	19
6.2 Appendix 2: Website branding.....	22
6.3 Appendix 3: Fact sheet DRIVER Project 2006.....	24
6.4 Appendix 4: RECOLECTA Website.....	25

## Executive Summary

This report for Best Practice in National Institutional Repository (IR) websites describes the evolution of a static but informative repository website into a more interactive repository portal. The central case study is the Belgian DRIVER website, but other national portals from DRIVER-affiliated partners will also be included in this report. By reporting on best, but also worst practices, this report serves to help countries with a scattered or incomplete repository landscape take charge and gather the repository managers into a community via a repository portal.

The report will begin with an introduction to explain the selection of Belgium as a case study and the purpose behind it, discussing the distinction between “champion” and “transitional” countries.

The following section, Phase I: DRIVER I, describes the origins of the DRIVER Belgian website and the initial design, under three headings: 2.1 Multilingual Information Portal; 2.2 Networking; and 2.3 Public Relations. Each heading will conclude with a summary of best practice points.

The next section, Phase II: DRIVER II, discusses the development of the portal into a more dynamic state and offers helpful scenarios for the development of other portals in “transitional” countries, as explained in the Introduction. This section is divided into three headings: 3.1 Interactive Repository Portal; 3.2 Portal Scenarios; and 3.3 Statistical Analysis.

The next section, Future: Budget, Sustainability and Evolution, discusses important aspects that need to be considered in any plan for the conception and development of a repository portal, and its relation to DRIVER. The three headings in this section reflect exactly these points and are 4.1 Budget; 4.2 Sustainability; and 4.3 Evolution.

The final section is the conclusion. Here, the report explains why the DRIVER Belgian portal experience is so valuable as a case study and as an example for other countries who may wish to set up either a DRIVER-dependent portal or an independent one. The report concludes that this case study contributes greatly to the objectives of work package 3: Dissemination and Support because it offers information on institutional repositories, scholarly communication and Open Access and DRIVER in particular. Moreover the study, offers support to the scholarly community in Belgium but also to the scholarly community in Europe as a whole.

# 1 Introduction and starting point

## 1.1 Introduction

This document serves as a best practice and case study report for (national) repository consortia and contains advice and scenarios on how to set-up a national repository website and portal. It is part of Workpackage 3: Dissemination and Support, and helps countries who are in a transitional phase (in a repository context), to build a network, set up an information portal and develop this into an interactive national repository portal.

The DRIVER website and wiki<sup>1</sup> provide a way for national repository communities to have an early online presence. However for the development of strong national repository communities it is important that they can develop an online identity with a website providing information relevant to their local needs including information on copyright, national funding and other issues specific to that particular community.

## 1.2 Objective of this document

The overall goal is to formulate and share best practices for the setting up of a national repository website, whether or not this happens in a DRIVER context. Best practices will be shared across so-called "champion" countries that have a repository aggregator or coordinator (the UK, France, The Netherlands) and the "transitional" countries that do not (Belgium and Spain), as case studies.

Through DRIVER dissemination activities, and by posting it on the DRIVER Support site<sup>2</sup>, this document will be distributed as a tool for national repository website managers. Possible publications in journals will be pursued.

## 1.3 Method

By taking the evaluation of the Belgian case study and comparing it with other approaches in European countries as outlined in the DRIVER wiki, different approaches and practices will be measured against their success, in order to come to a possible scenario for "new" repository portals. Best (and worst) practices will also be articulated for every theme, and presented in a frame at the end of every section.

The DRIVER website and Wiki served as a useful source of information for approaches taken in other countries looking to develop national repository networks and portals. Attempts were made via email and an online survey (Appendix 1) to gain further information from national contacts. The timing of these efforts unfortunately occurred during the summer holiday period with many contacts either unreachable or too busy to respond. This resulted in a poor response to our requests. Therefore this report will focus on the successful precedent established in the Belgian portal development and where information and best practice were available from other national portals they are included in this report.

---

<sup>1</sup> [www.driver-support.eu/pmwiki](http://www.driver-support.eu/pmwiki)

<sup>2</sup> [www.driver-support.eu/](http://www.driver-support.eu/)



## 1.4 Countries and partners

There are different levels of development of repositories throughout Europe<sup>3</sup>, but some countries are considered “champions” in this respect for one or all of the following reasons:

- they have robust networks
- they have state funding
- they enjoy strategic support from consortia of Institutions for Higher Education

Such “champions” are Germany (DINI), the UK (JISC), France (CNRS) and The Netherlands (SURFFoundation). On the other hand there are countries where this is developing but is not yet fully realized such as Spain, Belgium, Portugal, Denmark, Slovenia, Ireland and Finland. Belgium was chosen for the case study because of the direct involvement with DRIVER through the partner UGENT.

This report serves to support all these countries, but will be of most value to those countries where there has been little development by comparison (amongst others: Italy, Greece and Poland, and other non-DRIVER countries such as Croatia and Turkey).

---

<sup>3</sup> Inventory study into the present type and level of OAI compliant Digital Repository activities in the EU, by Maurits van der Graaf and Kwame van Eijndhoven, Amsterdam University Press, 2007. Available in OA at <http://dare.uva.nl/aup/nl/record/260225> (last access: 03/10/2008).

## 2 Phase I: DRIVER I

### 2.1 Multilingual Information Portal

#### 2.1.1 Goals and Objectives

During the lifespan of DRIVER I, when the project was not widely known in the European repository landscape, the first goal of the Belgian website was to inform the public of the activities of the project, as well as the underlying principles of Open Access. Key stakeholders such as librarians, repository managers, researchers, research administrators and the general public needed to know, in a short time frame, what DRIVER was doing and why.

The Belgian website<sup>4</sup> was set up six months into the eighteen month DRIVER I project. The objectives of the Belgian website were to introduce key stakeholders to the project and to the principles and literature on Open Access, as well as to inform them on the more technical and political side of repository issues – for example, policies, copyright, metadata schemes and the DRIVER Guidelines. The key stakeholders being targeted by the Belgian website were repository managers, institutional administrators, research funders, and researchers.

#### 2.1.2 Set-up

A ready-to-use CMS, provided by the Belgian firm Nettools<sup>5</sup>, was used to set up a website in three languages: the two national languages (Dutch and French) and English. With the CMS, (static) pages can be created, and an easy-to-use web editor enables direct input onto the page. It was possible to set up a parallel website in three languages, with intranet functionality.

The basic set-up fee was 1,000€ but yearly recurring costs are as low as 100€. Man-hours needed are around two weeks for the set-up and filling of the site, and one day a month for refreshing news items, adding new links and content. Once every six months the site is evaluated and medium sized changes are made to the interface and the page lay-out. Functionalities are upgraded at the same time.

Types of repository sites: For simplicity repository websites were identified as being either independent of DRIVER or DRIVER-dependent.

**Independent:** Where this kind of repository site is independent, that is to say, not linked to DRIVER, and hence everything needs to be originally designed, recurring evaluation will probably need to happen more often, and generally, more time will be needed for creating content.

**DRIVER-dependent:** Where the site is DRIVER-dependent, duplication of material, such as news items, held on the main European DRIVER website<sup>6</sup> should be avoided on the national website. Instead the national website should only add locally relevant information, such as national conferences and news items related to local research or meeting announcements. This minimizes the work needed to develop and maintain the DRIVER-

---

<sup>4</sup> [www.driver-repository.be](http://www.driver-repository.be)

<sup>5</sup> [www.nettools.be](http://www.nettools.be)

<sup>6</sup> [www.driver-support.eu/newsevents.php](http://www.driver-support.eu/newsevents.php)



dependent website and makes the site more relevant to the community it is intended to serve.

Logo: Originally, the DRIVER logo was customized (same logo, different colours), to have a special national DRIVER branding, but this was later deemed confusing in terms of the European project branding and the colours and logo were switched to the official blue of the European DRIVER website and logo. This way it is made clear that the national website is part of a larger whole and also relates to the country pages of the DRIVER wiki. The style is slightly different, but the colour and overall branding is similar (see Appendix 2). By using the DRIVER logo national websites can show their close relationship to DRIVER and some national websites have found this useful in overcoming political rivalries as DRIVER is seen being neutral.

### 2.1.3 Multilingual

The Belgian DRIVER website was set up during DRIVER I for practical and strategic reasons. A European website is very generic and does not always contain tailor-made information for the people in different countries. The Belgian DRIVER partner UGent wanted to set up a more locally oriented, national repository website in both official languages, as well as the English language, as one of the main European and internationally recognized languages.

### 2.1.4 Information

The purpose of the website is to provide the key stakeholders with news and advice, and to advocate the work of DRIVER and show its relevance to the Belgian community. For the national awareness and advocacy campaigns, fact sheets (3) about Open Access, DRIVER and the Berlin Declaration were made in three languages (Dutch, French and English), and disseminated to University officials and authorities. (See Appendix 3) These were placed on the website, as well as more practical 'how to' guides, quick links to technical pages, and links to the European DRIVER Support site, where official DRIVER documents (for example, the DRIVER Guidelines and Memoranda of Understanding) can be found.

To satisfy these requirements, the five tabs on top of the homepage during the DRIVER I phase were:

- **About us**, containing DRIVER's vision and mission
- **News**, containing relevant news items for Belgium
- **How-to's**, containing PDFs, practical reports and PowerPoints
- **Advocacy**, containing fact sheets, reports and white papers concerning Open Access
- **Links**, containing useful links about different aspects of scholarly communication and DRIVER-related articles
- **Intranet**, containing the minutes of locally organized DRIVER seminars

### 2.1.5 Interaction

The first version of the DRIVER website included an intranet page, to which users could log on with a generic username and password provided through an e-mail list, and visit



information about DRIVER-related activities but also "Meeting minutes": a feature of targeted information for repository managers.

The aim of the intranet was to provide a protected forum for interaction, and to keep the industry/ companies at a distance in terms of participation. Unfortunately, the intranet site did not prove to be a good place for feedback and discussion, as the password and login seemed already too steep an entrance for users to continue their visit to the pages behind the login, and there were no real interaction tools.

The mailing list proved to be a better place for interaction and group discussion. This is often used before and after a DRIVER network meeting with repository managers, when people decide what they want to talk about, and afterwards to share their opinion. Through the year, the postings on the list are mostly about upcoming events and announcements for conferences of interest.

To differentiate the target groups and contents of the list, two mailing lists were set-up: one for general repository and DRIVER-related issues and a second focusing on legal issues, with a different group of people on the list (legal experts from universities).

The addresses are 'driver@lists.lib.ugent.be' and '[driver-legal@lists.lib.ugent.be](mailto:driver-legal@lists.lib.ugent.be)'. Both are hosted by the University's installation of the GNU Mailman software.

### **Summary for sharing best practice on Multilingual Information portals:**

- Set up targeted email lists for interaction with users and starting a community
- Push users to your website by sending them relevant content that refers to your website

## **2.2 Networking**

The Belgian DRIVER team used the website as a 'business card' when contacting relevant persons at Belgian universities. This way, UGent gathered interest in the project and promoted specific DRIVER activities that it organized, for example the National Open Access conference<sup>7</sup> which gathered all Belgian university rectors; as well as technical meetings and legal discussions. From there, most interaction and networking went via the mailing list, but after the meetings, the website was again used for minutes and posting of relevant documents on the intranet.

---

<sup>7</sup> [www.driver-repository.be/content1.aspx?PageId=162](http://www.driver-repository.be/content1.aspx?PageId=162), also accessible through main Belgian DRIVER site [www.driver-repository.be](http://www.driver-repository.be), under "News"



### **Summary for sharing best practice on Networking:**

- Organize national meetings on specific OA- or DRIVER-related topics, to be promoted via the website
- Make the website the central information gathering place, and make sure you still attract visitors after the meeting, by posting relevant and interesting content

## **2.3 Public relations**

The DRIVER website has been promoted through national science websites, and websites from scientific library consortia, as well as through a couple of newsletters and national library-related conferences. The logos and names from participating universities and institutions were placed next to each other on the website, for extra visibility and to create a harmonious national environment in which many institutions could be found together.

All these small efforts can add to a positive public image for the project and your national portal.

### **Summary for sharing best practice on Public Relations:**

- Promote the website through routes and in places of relevance to your audience. For researchers this means at relevant conferences and through societies of information professionals, scientific websites and newsletters

## 3 Phase II: DRIVER II

### 3.1 Interactive Repository Portal

#### 3.1.1 Goals and Objectives

The informative goal of the initial Belgian DRIVER I website has been met with a considerable success for the targeted community. People in the scholarly communication world in Belgium know what DRIVER does, who is working on the project and how to reach them. The Belgian DRIVER conference<sup>8</sup> and its webpage and outcomes have helped with the public image building, and the email list further improves and maintains the contact with over twenty-five repository managers.

The new objectives of the DRIVER II national website are:

- To create a search portal offering access to all Belgian repositories
- To provide a space for interaction and content exchange with local users
- To remain an informative, easy-to-navigate and relevant website for Belgian professionals in the field of scholarly communication

#### 3.1.2 Changes in portal

To change from a multilingual information portal into an interactive repository portal, the focus needed to move from passive information-feeding (reports, links, pdfs), to a more dynamic relationship with the user. Because of time constraints and the difficulty with maintaining three informative sites in different languages, the portal became mono-lingual, and in keeping with international convention, English was chosen as the main language.

Interaction with users used to happen in a one-way system via the intranet, which was deemed too closed and was not used often (login procedure). The intranet was deleted and instead, the bimonthly newsletters direct users to non-public pages on the website, where they can access information scaled to their needs. From these pages they can also access meeting minutes, strategic documents and invitations. This means that users can access information tailored to their needs when they want to, whilst it still remains closed off to people not affiliated or interacting with DRIVER via the national network.

The repository search service was installed with the help of the DRIVER technical team and offers access to all the Belgian repositories integrated in DRIVER. Different use scenarios were evaluated. That chosen was one which gave a real-time, quick and convenient portal without investing too many man-hours or machines. This is noted as *Scenario One* in the sections below.

Another change in the portal is the former 'Links' page, which turned into a direct link from the homepage to a del.ici.ous page<sup>9</sup>, because this is web-integrated and makes it easier to search for and add relevant links to, because of the browser plug-in (relevant URLs can be tagged and are immediately integrated onto the links page) This way, the webmaster does not need to add every new tag in the html code of the website, and saves time, whilst the social tagging feature (alerts through network) makes it easier to discover new links.

---

<sup>8</sup> [www.driver-repository.be/content1.aspx?PageId=162](http://www.driver-repository.be/content1.aspx?PageId=162)

<sup>9</sup> Deli.ici.ous, a Web 2.0 social software for tracking bookmarks , <http://delicious.com/DRIVERBelgie>



The new tabs from the homepage are:

- **About Us**, containing DRIVER's vision and mission
- **News**, containing relevant news items and newsletters for Belgium
- **OA-Awareness**, containing fact sheets, reports and white papers concerning Open Access
- **Technical**, containing the DRIVER guidelines, practical guides for repository managers and links to the support site
- **DRIVER-BE**, documents relevant to the Belgian DRIVER community
- **Search repo's**, the national repository search service

### 3.2 Portal Scenarios

Four different scenarios or options are possible for the creation of a portal for a national repository consortium (NC):

- 1) The NC is willing to have a portal at minimal cost. The DRIVER technical partners will deploy an instance of the Lite User Interface, customized with the graphics provided by the NC (see Belgium<sup>10</sup> and Recolecta<sup>11</sup>). The service can run on DRIVER machines or be hosted on NC machines. The portal interacts with the content harvested and held in the DRIVER Information Space. The operation takes a few days, and needs to be repeated whenever the GUI of the NC changes.
- 2) The NC is willing to build its own portal by accessing the DRIVER Information Space. The DRIVER technical partners will give support for having this portal interact with the DRIVER search services. The operation requires a length of time that depends on the portal design and development.
- 3) The NC is willing to coordinate the harvesting and cleaning of the national repositories. The DRIVER technical partners will deploy new Aggregation Services and train an Aggregator Manager from the NC on how to use them. The aggregation process will populate the DRIVER Information Space, thus DRIVER will delegate management of these Repositories to the NC. The operation takes approximately a month.
- 4) The NC is willing to be independent from the DRIVER Information Space. The DRIVER technical partners will give support for deploying a new instance of the DRIVER Infrastructure, to be independently used by the NC, and train NC personnel in administrative and aggregation manager roles. The operation can take approximately two months.

The first (very DRIVER-dependent) and second (more independent) scenario can progress to the third scenario: according to the man-hours and infrastructure available, the national portal can move from a rather passive stance of just using DRIVER's data, to a more active approach of harvesting and cleaning data.

This combination (one, moving to three) will be the scenario in the coming months for the Spanish Recolecta portal (see Appendix 4). This shows that these options are well-suited for "transitional" countries and can be adapted along the way.

---

<sup>10</sup> [search.belgium.driver.research-infrastructures.eu/](http://search.belgium.driver.research-infrastructures.eu/)

<sup>11</sup> [search.recolecta.driver.research-infrastructures.eu/](http://search.recolecta.driver.research-infrastructures.eu/)

The fourth scenario is a theoretically possible approach, but not supported by DRIVER at this moment because of the demand on resources that will to be invested in it. If a sustainable business model for DRIVER were to exist, it could certainly include charging for the fourth scenario.

### Summary of best practices for the choice of a scenario for the portal:

- Make a list with specifications about what you want from the portal and compare it to the scenarios above
- Talk with the technical staff about their available machines and time for this project
- Talk to DRIVER via [helpdesk.driver.research-infrastructures.eu](http://helpdesk.driver.research-infrastructures.eu) and let them know which scenario you think is the best option for your country or project

### 3.3 Statistical Analysis

The Belgian DRIVER website has been registered with Google analytics since April 2008 in order to get a better view on the unique visitors and site traffic. The site attracts an average of 181 unique visitors per month. The community of repository managers in Belgium is not very large and so this visit rate suggests that it is succeeding in providing a useful service for the community. Provenance results show that the visitors come mostly from search engines (61%), and direct (24%) traffic. Reference sites account for 15% of the traffic.

In Figure 1, a comparison of two months (August 2008 and September 2008), shows that the bi-monthly newsletter (sent on Sept 16<sup>th</sup>) has a great effect on the visits. This push-principle (pushing users to the website via bookmarks in the newsletter) seems to work well. Compared with the month when there was no newsletter posted, in which the visits are more constant; the month with the posted newsletter shows a significant increase of visits.

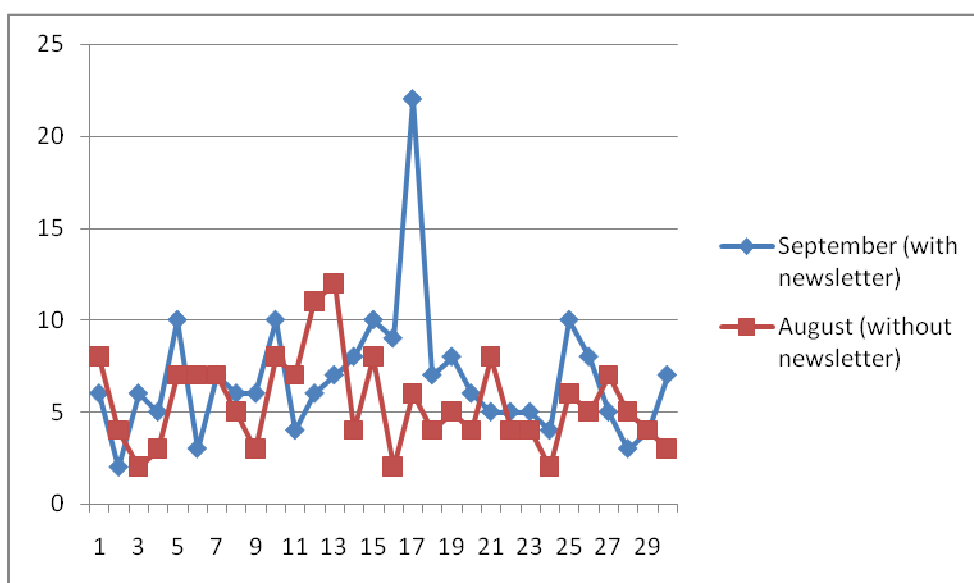


Figure 1: The statistical distribution of unique visitors throughout August and September 2008

Another element of the analytics software shows where the visitors are located geographically: most visitors come from Belgium (120) and the neighbouring countries (40), as well as the rest from Europe. Some extra visitors come from the US (East and West coast, which can be accounted for through their high concentration of repositories), South-America and South-Africa and Asia. The figure shows that the targeted group (Belgian DRIVER community) finds its way to the website, and the wider repository community also visits the site on a less frequent basis.



Figure 2: the geographical distribution of unique visitors in September 2008 for [www.driver-repository.be](http://www.driver-repository.be)

### Summary of best practices for statistical analysis:

- Register the website with Google analytics
- Make sure the content is crawlable by Google and preferably also Google Scholar
- Put a lot of links to other scholarly communication websites, and make sure they link back to your site
- Look at the monthly reports to identify areas in which you can increase visitors
- Check the keywords users have entered to make sure your website's metadata and content match intuitive searches
- Push users to your website by sending them short, attractive content through which they can link to your website to read more

## 4 Future: Budget, Sustainability and Evolution

### 4.1 Budget

Because the Belgian DRIVER website costs only 100€ a year in hosting of the site, a financial plan is not needed from the 'technical' point of view. Another, more difficult issue is the man-hours and organizational engagement that is needed for a national collaboration. Apart from the goodwill and collaboration of research administrations, universities and research funders, enough resources need to be allocated for the sustainability of the website.

As stated above, the choice of a scenario for the portal will influence the amount of man-hours needed, as well as the choice for an independent or DRIVER-related website. All these things should be taken into account when planning the budget. The number of people working on a site can differ a lot: whereas the website in Belgium is maintained by one person for one day a month, in Spain, five people work on the Recolecta website collaboratively, and in other countries (NL) this number is even higher. This means that substantial funds need to be structurally provided for the long term. A good practice in this case is to make sure the repository portal is part of a larger government funded system (such as Narcis<sup>12</sup> in the Netherlands), see below.

### 4.2 Sustainability

Because the long-term technical and practical support of DRIVER cannot be guaranteed, it is best to integrate the repository portal into a more stable and secure website or national portal, whose long-term sustainability is ensured on a technical and financial basis.

#### Best practices can be found in:

- The Netherlands, where the DARE repository portal is maintained by national ICT and research infrastructure SURF, which integrates their national CRIS system into a one-stop shop, 'NARCIS'.
- France: where the national super-repository HAL<sup>13</sup> is financed by the government's research administration
- Norway: portal NORA<sup>14</sup> acts as a single harvesting and information portal for Norwegian research
- Ireland has just funded a national Open Access project, IREL-Open<sup>15</sup> for the implementation and federated harvesting of its OA repositories
- JISC in the UK: a national research funder which invests highly in Open Access and scholarly communication projects. It partly funds SHERPA projects such as OpenDOAR<sup>16</sup>, which have a national and international scope.

---

<sup>12</sup> [www.narcis.info/index](http://www.narcis.info/index)

<sup>13</sup> [hal.archives-ouvertes.fr](http://hal.archives-ouvertes.fr)

<sup>14</sup> [www.ub.uio.no/nora/oaister/topic.html?siteLanguage=eng](http://www.ub.uio.no/nora/oaister/topic.html?siteLanguage=eng), and [openaccess.no](http://openaccess.no)

<sup>15</sup> [www.irel-open.ie](http://www.irel-open.ie)

<sup>16</sup> [www.sherpa.ac.uk](http://www.sherpa.ac.uk), [www.opendoar.org](http://www.opendoar.org)



Other countries such as Finland, Belgium, Spain and Denmark are also experimenting with national portals and Open Access websites, but in these countries there is a less structurally funded approach. That's why, in this report, these countries are called 'transitional'.

### 4.3 Evolution

Just like the DRIVER portal and services in themselves, the national website will need to evolve, and be very dynamic and interactive to keep up with current developments in the scientific world. Web 2.0 and 3.0 evolutions with semantic content sharing, user tagging and rating, videoconferencing and other interactive features will need to be analyzed in order to keep abreast with technological evolutions. Interoperability with, and linking to software such as Zotero and other scholarly reference software, will increase the usage and popularity of repository portals, as well as interoperability with, for example, CRIS data. These issues are further analyzed in DRIVER D4.3 - Technology Watch report, and D3.9 - Usability Assessment Study.

Apart from these technical developments, integration into a national research portal will guarantee the sustainability and continuous use of the website.

#### **Summary of best practice for Evolution:**

- As the webmaster of the national website make sure you know what is happening on the DRIVER side via the main DRIVER website so that when services or tools become available, integrate them into your website or portal
- Stay abreast of technological developments and internet evolutions: you can use free software tools to make your website easier-to-use or more dynamic
- Use standardized approaches and make sure your services are interoperable with DRIVER as well as other important infrastructures (Google Scholar, Oaister)

## 5 Conclusion

Thus, in conclusion, this report has shown that

- firstly, it is possible to set up a national repository portal to serve the scholarly community
- secondly, that it is welcomed by the scholarly community who find it useful and who use it regularly
- thirdly, that is a useful tool for DRIVER in particular in reaching its goals of disseminating information and supporting the repository community
- and lastly, that the experience of one particular national repository portal can generate many useful hints and suggestions for the conception, development and maintenance of other national portals – whether they are DRIVER-dependent or not

The report has shown specific examples of repository development, such as networking and public relations, and has considered areas that are necessary for any repository developer, such as budget and sustainability of the portal.

It has therefore shown that the Belgian DRIVER portal contributes greatly to the work of Workpackage 3: Dissemination and Support, since it operates within the scholarly community, for the scholarly community and shows how DRIVER can operate as a valuable source for information but also as powerful force for the enhancement of repository development across Europe. The specific example of a successful national repository portal in Belgium, responsive to national diversity and a fragmented science policy, is in itself, an example of best practice for all countries willing to set up their own national portal, within the larger DRIVER context.

## 6 Appendices

### 6.1 Appendix 1 Survey sent to other national repository portal managers.

URL: [http://www.surveymonkey.com/s.aspx?sm=44GedHozAXImOxjosGt5iw\\_3d\\_3d](http://www.surveymonkey.com/s.aspx?sm=44GedHozAXImOxjosGt5iw_3d_3d)

#### Best Practices Survey for National IR websites

Please provide us with your answers regarding your national repository website/portal. The results will be integrated into a public report, so if any of these results need to stay anonymous/hidden, please notify us at [karen.vangodtsenhoven@ugent.be](mailto:karen.vangodtsenhoven@ugent.be)

#### 1. What is the web address of your national repository/ Open Access portal?

What is the web address of your national repository/ Open Access portal?

#### 2. Does the portal contain a repository aggregator?

- Does the portal contain a repository aggregator? yes
- no

#### 3. If the answer to the above question is yes, how many repositories are harvested by the aggregator?

If the answer to the above question is yes, how many repositories are harvested by the aggregator?

#### 4. What are the purposes of the portal? (multiple answers possible)

- What are the purposes of the portal? (multiple answers possible) maximize visibility of national research output
- provide end-users with a unified search portal for your country's research output
- promote Open Access with researchers and administration
- build a network of content providers (repositories)

- serve administrative purposes (bibliographies, CRIS systems)
- offer strategic information on Open Access
- offer practical/technical advice on repository issues
- provide an interactive place for discussion (eg between repository managers or researchers)
- announce news and information

Other (please specify)

## 5. How do you reach the above objectives?

- How do you reach the above objectives? by providing an interactive and informative space for repository troubleshooting (forum, wiki)
- through fact sheets, press releases, green papers etc.
- by promoting the portal's services via newsletters, blogs, contacts
- by offering extra services on top of the repositories
- by offering extra visibility by displaying the repositories' logos
- by linking the website with other communication channels (blog, email lists, ...)

Other (please specify)

## 6. How many people are professionally involved in the website?

- How many people are professionally involved in the website? 1
- 2
- 3
- 4
- 5
- more than 5

**7. What is your estimated yearly budget (in €) for the portal?  
(you can combine € and FTE's)**

What is your estimated yearly budget (in €) for the portal? (you can combine € and FTE's)

**8. Does the website attract a lot of visitors?**

- Does the website attract a lot of visitors? I have no data about the traffic
- between 1- 100 visitors a day
- between 100-500 visitors a day
- more than 500 visitors a day

**9. What is your impression about the use and feedback?**

- What is your impression about the use and feedback? Not very good, there isn't much activity going on
- Fine, but it could be better in terms of traffic
- Great, we get lots of visitors, only they could be a bit more active
- Terrific, a lot of our users contribute actively to the content of the portal

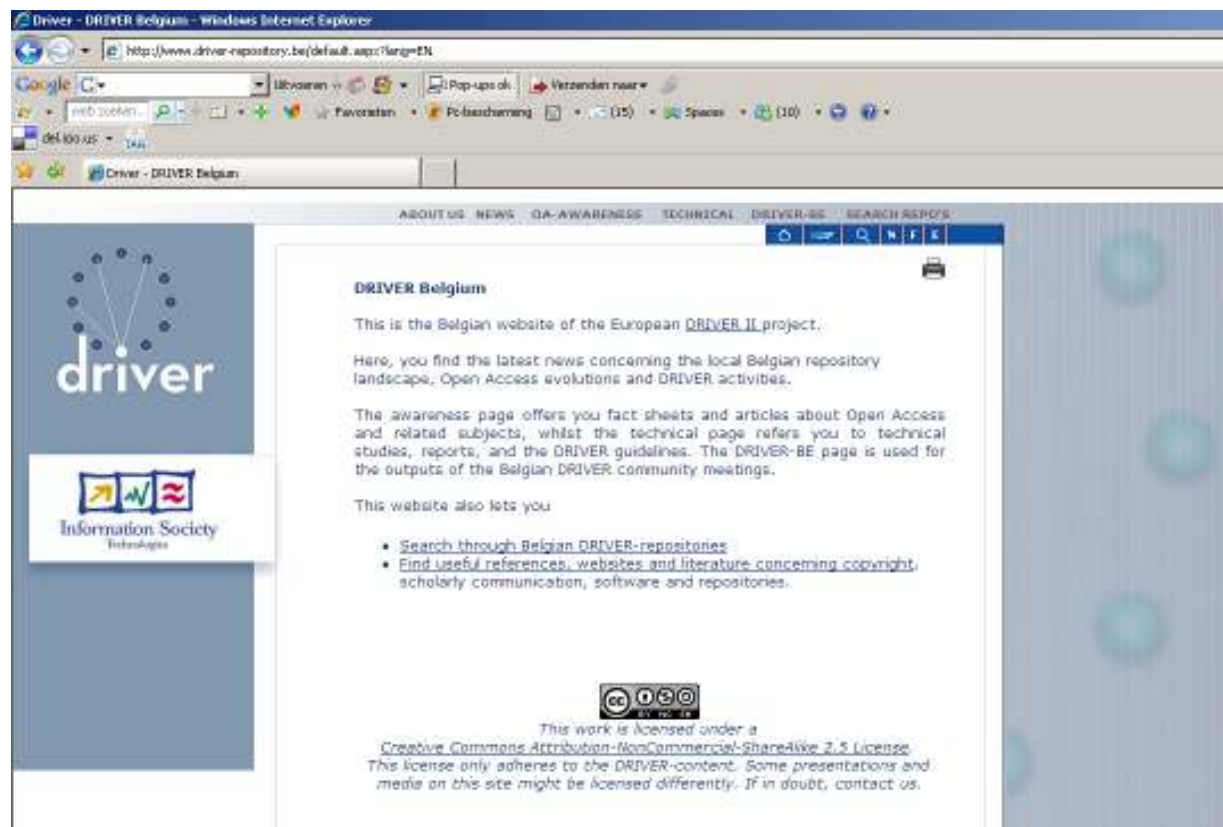
**10. Please describe a best practice scenario for networking, attracting visitors, user incentives or feedback and communication media. Something that has worked well for your portal.**

Please describe a best practice scenario for networking, attracting visitors, user incentives or feedback and communication media. Something that has worked well for your portal.

Done

## 6.2 Appendix 2: Website branding

Belgian website [www.driver-repository.be](http://www.driver-repository.be)





## European website [www.driver-repository.eu](http://www.driver-repository.eu)

DRIVER | Home - Windows Internet Explorer

http://www.driver-repository.eu/

SEARCH THE REPOSITORIES | LEARN ABOUT DRIVER | FIND SUPPORT | REGISTER YOUR REPOSITORY

driver  
Digital Repository Infrastructure Vision for European Research

Home  
About DRIVER  
Driver Consideration  
Partners  
Documentation & Downloads  
Links  
Contact Us  
Page Home

Home  
SEARCH... GO

Latest News

- DRIVER infrastructure software release is available now!
- Launching DRIVER: online European portal voor wetenschappelijk onderzoek
- DRIVER v1.0.1 Software for infrastructure DRIVER is approved

**DRIVER: Networking European Scientific Repositories**

Considered the largest initiative of its kind in helping to enhance repository development worldwide, DRIVER is a multi-phase effort whose vision and primary objective is to create a cohesive, robust and flexible, pan-European infrastructure for digital repositories, **enabling researchers to access and disseminate their research results more effectively, provide a valuable service to society, and help building research and education.**

DRIVER has established a network of national research agencies and Open Access repositories. DRIVER will coordinate these efforts and coordinate the initial research and a fully operational, sustainable network, involving the network as a large collaboration of repositories. DRIVER is aligned to the work of electronic infrastructure development envisaged in the European eINFRA network and in line with the objectives of the European Commission's 7th Framework programme. It aims to: - coordinate the way the infrastructure is used to share knowledge, and value its primary research data and information enabling secondary research more effectively, provide a valuable service to society, and help building research and education.

The objectives of DRIVER in its second phase of the project, include: identify, expand, sustain and strengthen the efforts of DRIVER, in the following areas:

- develop interoperable and sustainable repository systems of Research Data and Publications
- establish a robust, sustainable repository infrastructure recognising the open access initiatives developed by DR
- establish a network of national Research Agencies of national publications
- research and pilot the feasibility to support networks of research digital objects
- build networks and federating communities
- establish repository support
- define the responsibility in Research Europe's Digital Library community
- Open Access in Europe's research community

DRIVER is a fully distributed consensus and public awareness from the start:

- It involves the expertise of its partners in every domain: from such as technical knowledge, knowledge of national libraries, experience in strategic funding and project management.
- The involvement of computer groups and technical groups facilitates the building of the system through its specific roles.
- The European background to its partners, from Slovenia to Denmark, Greece to the UK, is a great asset in the development of a pan-European infrastructure.

The engagement of each driver centre and partner in the common DRIVER mission is of essential value to both operational



## 6.3 Appendix 3: Fact sheet DRIVER Project 2006

### DRIVER

#### What?

A project funded by the sixth-framework programme (FP6) of the European Commission (Information Society & Technology directorate). The acronym stands for **Digital Repositories Infrastructure Vision for European Research** = the vision of a network of European digital repositories for the diffusion and availability of scientific research.

#### Goal

To build an infrastructure of people and technologies, through the use of state-of-the-art technological standards and an extensive network, which guarantees the diffusion and archiving of all OA materials coming from scientific institutions. That way, scientists worldwide have free access to high-quality European research results, which can be re-used, built on, and most importantly, cited! This way an article can achieve significantly more impact and this will benefit both the individual researcher as well as their institution and society in general. Within DRIVER, the main focus is to make European research as visible as possible within the global knowledge economy.

#### Who?

DRIVER consists out of **ten partners out of eight EU-countries**: some countries have a national network of scientific institutions which acts as a partner (SURF in the Netherlands, CNRS in France, CNR in Italy); other partners are individual universities (UGent, University of Athens, Bielefeld, Göttingen, Warschau, Bath, Nottingham). The task of the University of Ghent within DRIVER is advocacy and to raise awareness, for researchers as well as research administrations, funding and governmental agencies. The University Library of Ghent will also provide a portal to exchange best practices and technical expertise. January 2007 will see the birth of the Belgian website [www.Driver-repository.be](http://www.Driver-repository.be). In Spring 2007 Ghent University Library will also conduct user studies (Spring 2007). The more successful the DRIVER project is, the more high quality material will become available and thus, the higher the visibility and impact of all participating research institutions.

## 6.4 Appendix 4: RECOLECTA Website

<http://search.recolecta.driver.research-infrastructures.eu/>

